



# Bristol Village Computer Club - November 2017

## ISSN: 2327-2198

### Next Computer Club (BVCC) Meeting

Len Nasman will demonstrate how to create greeting cards using the free LibreOffice Draw software, and show Paint Shop Pro 2018.

November 13, 2017, 7:30PM Glenn Center

Also on BTV

If you are reading this on your computer display, remember that **Acrobat Reader** has a **zoom** feature (under "**View**" in your top tool bar) for enlarging or reducing text and graphics.

### **Quick Index**

If you are reading online, you can jump directly to articles in this newsletter. Just left click on the Index listing.

### Newsletter Contents

Quick Index.....	1
<b>Which Windows?.....</b>	<b>1</b>
<b>Windows Scams.....</b>	<b>2</b>
<b>The Library of Congress.....</b>	<b>2</b>
<b>Looking for copies of old music?.....</b>	<b>4</b>
Turn MIDI Files Into Sheet Music.....	5
<b>It's Greeting Card Time Again.....</b>	<b>5</b>

## **Which Windows?**

*By Len*

It might be useful to know exactly which version of Windows you are using. (Unless, of course you are using a computer running MAC or Linux.)

The current version of Windows is 10, either the Home or Professional version. Support for Windows 7 will continue until January 14, 2020.

## **BVCC OFFICERS**

**President: Daryl Fourman**

**Vice President: Open**

**Treasurer: George Hartwell**

**Secretary: Charles Kelso**

**Newsletter Editor: Len Nasman**

**CLUB EMAIL: [bvclub@bvres.org](mailto:bvclub@bvres.org)**

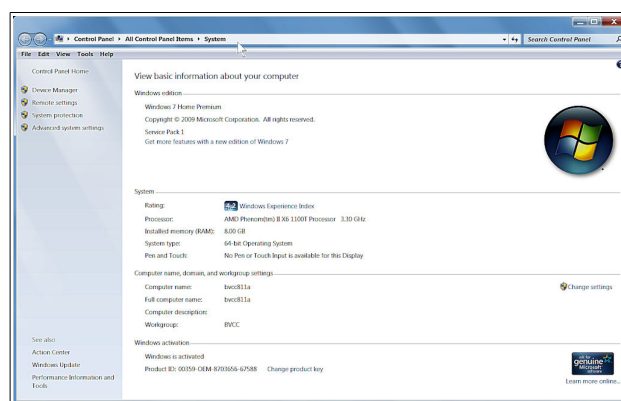
All earlier versions of Windows are no longer supported by Microsoft. This does not mean that if you are running an older version your computer will stop working. What it does mean is that you will no longer get bug fixes or updates. The updates protect your computer from hackers, so if you are connecting to the Internet, it is important to keep your Windows updated.

OK, here is how to find out what version of Windows you are using.



Pause  
Break

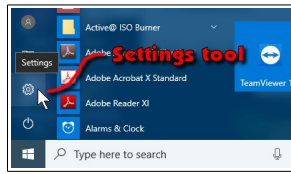
In Windows 7 hold down the **Win-** **Windows** key and press the **Pause** **Break** key. [Or, go to the **Control Panel** and select **System**.]



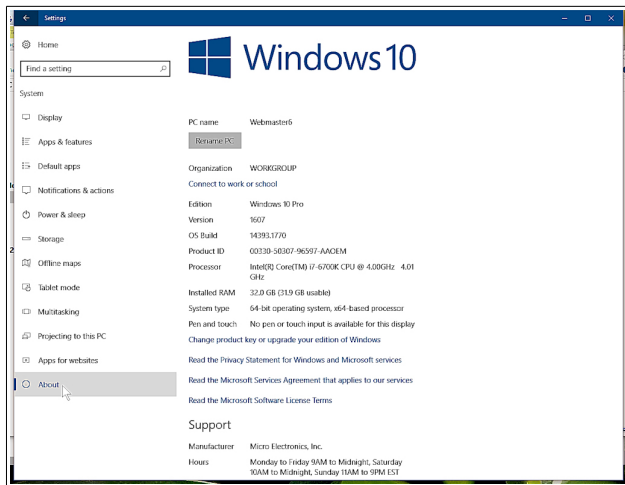
The Windows 7 System window will show what version of Windows is installed on your computer. It will also show what processor and how much RAM is installed.



In Windows 10, select the **Start** tool from the taskbar, then select the **Settings** tool.



In the Windows Settings window, select the **System** option. Then in the Settings window select the **About** option from the list on the left side of the display.



As of this writing, the most recent update is version 1709.

## Windows Scams

*By Len*

Many of our residents, including myself, have received phone calls from someone claiming to be from 'Windows' or 'Office' and claiming they want to help you with issues regarding your computer. If you go along with the caller, you will probably be asked to turn on your computer and then open a particular web site, or even open control of your computer to an external operator. At the least, you should simply hang up on the caller. When I am in an ornery mood, I will tell the caller that this number is on a **do not call** list and then blow my police whistle as loud as possible into the phone.

Here is some general info about these scams.

The best thing you can do to help protect yourself from fraud is to educate yourself. If you re-

ceive a notification or call from someone claiming to be from a reputable software company, here are a few key tips to keep in mind:

Be wary of any unsolicited phone call or pop-up message on your device.

Microsoft will never proactively reach out to you to provide unsolicited PC or technical support. Any communication we have with you must be initiated by you.

Do not call the number in a pop-up window on your device. Microsoft's error and warning messages never include a phone number.

Never give control of your computer to a third party unless you can confirm that it is a legitimate representative of a computer support team with whom you are already a customer.

If skeptical, take the person's information down and immediately report it to your local authorities.

There are agencies that take reports about these scams. If you are interested in reporting a scam to these agencies, you can find links near the end of this linked article.

<https://blogs.microsoft.com/on-the-issues/2017/05/18/fight-tech-support-scams/>

## The Library of Congress

*By Len*

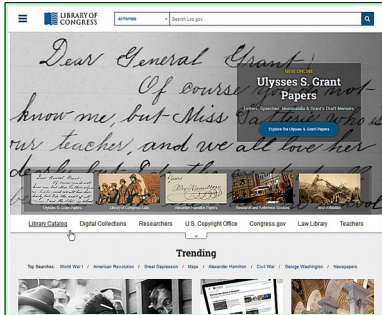
**From Wikipedia:** The Library of Congress is the research library that officially serves the United States Congress and is the de facto national library of the United States. It is the oldest federal cultural institution in the United States.

The Library is housed in three buildings on Capitol Hill in Washington, D.C.; it also maintains the Packard Campus in Culpeper, Virginia, which houses the National Audio-Visual Conservation Center

The Library of Congress claims to be the largest library in the world. Its "collections are universal, not limited by subject, format, or national boundary, and include research materials from all parts of the world and in more than 450 lan-

guages. Two-thirds of the books it acquires each year are in languages other than English.

You might wonder how this relates to computer users. Well, it turns out that you can access an amazing amount of material online through the [Library of Congress website](#).



History lovers can have a lot of fun surfing around on the Library of Congress web site. I tried entering **Ohio Territory** in the search box and uncovered a variety of interesting (to me anyway) things. For example, here is a copy of part of a map of this area in the late 1700's.

A map of the United States exhibiting post roads & distances : the first sheet comprehending the nine northern states, with parts of Virginia and the territory north of Ohio



One of the options available on some pages is an audio player that reads the text. So, if you can't, or don't want to read the fine print, you can use the Library of Congress as a giant audio book collection.

Listen to this page

#### About this Collection

Captain Pearl R. Nye: *Life on the Ohio and Erie Canal* captures the culture and music of the men, women, and children who worked and lived along the Ohio and Erie Canal. Nye, who was born and raised on a canal boat, never lost his love of the "Big Ditch." After the canal closed permanently in 1913, he devoted considerable time and energy to preserving its songs and stories. This online presentation includes 22 audio discs containing 75 songs performed by Nye, 74 manuscripts of correspondence and song texts, and 7 photographs. The recordings were made by John Lomax, Alan Lomax, Elizabeth Lomax, and Ivan Walton between June 1937 and September 1938. Library staff transcribed the songs (both traditional music and original compositions by Nye) and included them in this presentation.

A sentence being read is highlighted in green while the current word is highlighted in blue. This is a nice option for some users.

There is a large collection of old sheet music to be found at the Library of Congress. Here is an [example](#).



#### NOTATED MUSIC

**He'd have to get under - get out and get under**

sheet music | 1 score | Sheet Music (Form).

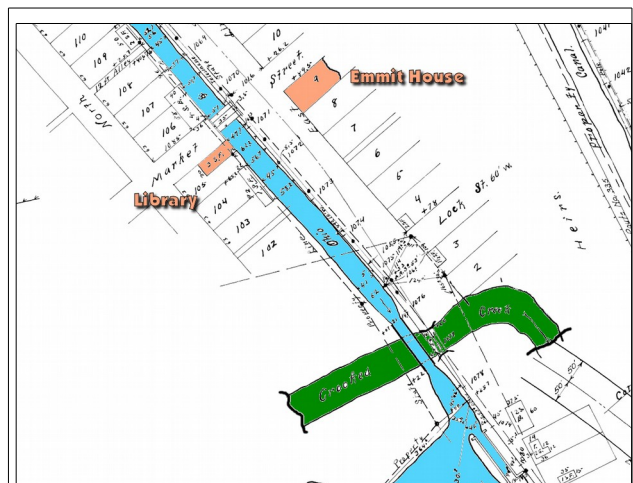
**Contributor:** Maurice Abrahams Music Co. - Abrahams, Maurice - Clarke, Grant - Leslie, Edgar

**Date:** 1908

**Resource:**

[View 8 Results](#)

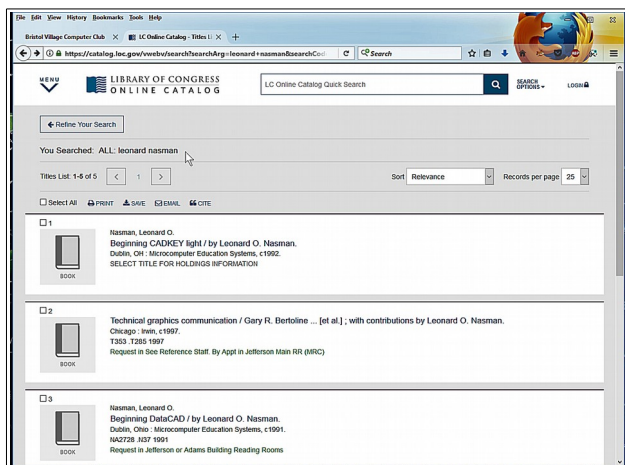
One of the things I discovered while surfing was a collection of maps of the Ohio-Erie Canal. I copied a section of one of the maps and modified it a bit to show where the canal went through Waverly.



**In Waverly, the canal used an aqueduct to cross a creek.**

People who officially register copyrights for their works submit copies to the Copyright office. These copies are added to the Library of Congress collection. So, if you want to have your name immortalized, just properly register a copyright for your work. Your friends will always be able to find you there.





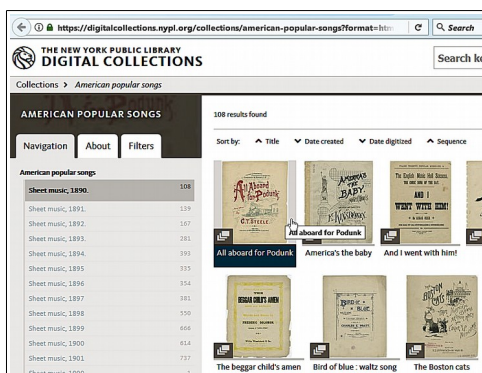
## Looking for copies of old music?

*By Len*

There may be a time you would like to find a copy of some old sheet music. The nearest music store probably does not stock old stuff, and it takes too much time to wander through antique stores and paw through piles of old music. Your computer web browser to the rescue.

There are a number of digital sheet music collections. Of course, one option is the Library of Congress, as mentioned (and linked to) above.

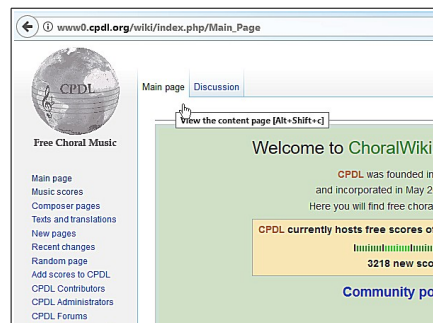
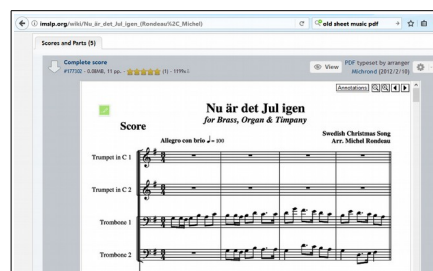
There are other libraries that maintain digital sheet music collections. One is the [New York Public Library](http://www.nypl.org).



The [IMSLP Petrucci Music Library](http://www.imslp.org) is a source for music scores that are in the public domain. Searching and downloading scores is a little tricky, but you can get PDF copies that can be printed from your computer.

I was able to find a score for a traditional Swedish Christmas song from the IMSLP web site.

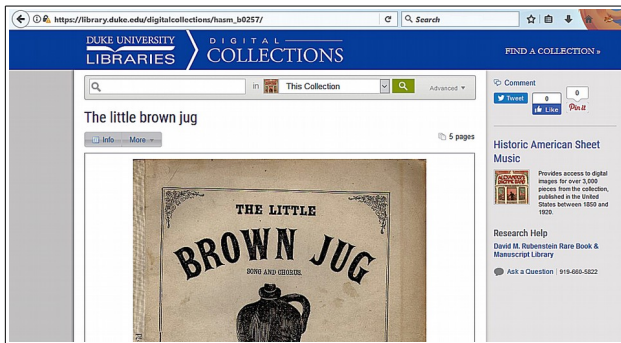
A site dedicated to free choral music is [CPDL](http://www.cpd.org). This site provides a number of ways to search for scores.



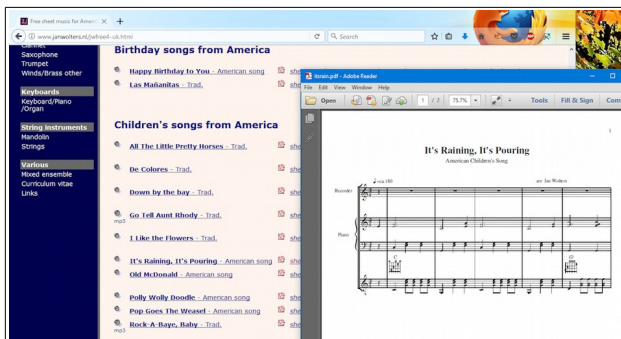
The scores can be downloaded as PDF files for printing. There is also an option for listening to the music.

A number of universities maintain collections of old sheet music that is available by downloading PDF files. For example, [Duke University](http://www.duke.edu) has a collection of over 3,000 pieces in it's historic American sheet music.





Sometimes music shows up in surprising places. For example, here is an old American children's song found on a web site in the UK.

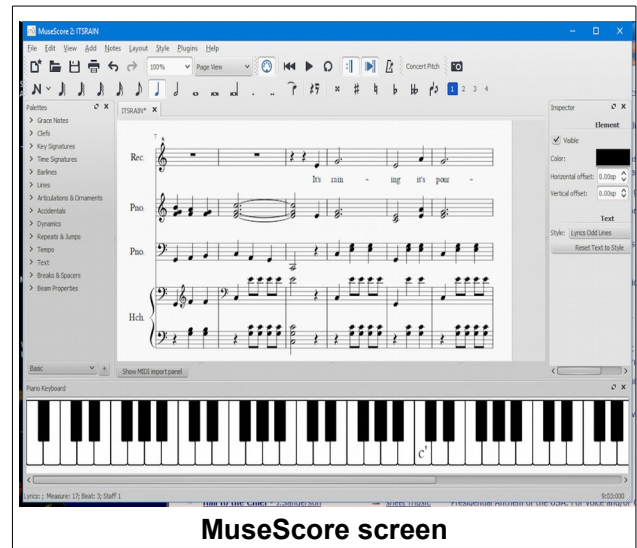


## Turn MIDI Files Into Sheet Music

Some music sites have MIDI files instead of PDF files. MIDI files are music files that can be played on most computers using Windows Media Player or VLC. Of course PDF files can simply be downloaded and printed. But, what if you want to get sheet music from a MIDI file?

One trick is to use the free [MuseScore](#) program. MuseScore can import MIDI files. Once the MIDI file is open in MuseScore, it can be edited and a PDF version can be exported.

Here is an example of ***It's Raining, It's Pouring*** that was first saved as a MIDI file, and then the MIDI file was opened using MuseScore and then exported as a PDF file.



MuseScore screen



PDF file exported from MuseScore

The bottom line is that the Internet can be a big help to folks who are trying to find copies of music scores.

## It's Greeting Card Time Again

By Len

Due to a few requests, I am offering to tutor BVCC members in creating greeting using the free [LiberOffice Draw](#) program. There is a link to a tutorial for this on the BVCC [Schoolhouse web page](#).





Selecting the option shown will open a PDF file which can either be used online or printed.

The latest version of LibreOffice can be downloaded from the [LibreOffice web site](https://www.libreoffice.org/download/download/). You need to know what version of Windows your computer has. To find out, review the **Which Windows** section in this newsletter.



The first step in creating a greeting card for folded 8 1/2 by 11 inch paper is to determine how the card will look when it has been folded.

The first section of the tutorial suggests folding a piece of paper, writing the names of each side of the folded card, and then unfolding the paper. This will reveal what parts of the card have to be rotated to make the sides of the card right side up after folding.

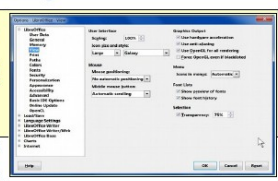
### Creating Greeting Cards

by Len Nasman, Bristol Village Ohio Computer Club  
Copyright 2015 - may be copied with permission  
contact [gsnasman@bvcc.org](mailto:gsnasman@bvcc.org)

If you want to create your own greeting cards, but you do not want to spend money on special software, you are in luck. It turns out that with just a little effort you can use the **Drawing** program that is part of the free **LibreOffice** suite.

To download **LibreOffice**, go to [www.libreoffice.org](https://www.libreoffice.org).

**Installation Notes:** The illustrations in this article were created using LibreOffice Draw 5 running on a Windows 7 computer. The **Galaxy** tool icons were used. To have your screen look similar to the illustrations, select **Tools, Options, View, Large, Galaxy** icons. Also, from the **Menu Bar**, select **View, Toolbars**, and toggle **Drawing on**.



The following instructions are for creating a four page greeting card by folding an 8 1/2 by 11 sheet of paper in half twice. Most office supply stores in the USA carry envelopes that are designed to fit this size card. Look for envelopes that are 4 3/8 by 5 3/4 inches. (If you are outside the USA, adjust measurements as required.)

**Plan Ahead**

The first step is to determine the relative orientation of the four pages of your greeting card. (This example uses a portrait layout card. Landscape layout could also be used.) Take a piece of paper and fold it twice. For the vertical portrait format book fold card in this project, the sheet must be folded in half twice as shown.

- ✓ First fold the sheet in half along a horizontal line (with the sheet in portrait mode). Then fold the sheet a second time.
- ✓ When you have folded the sheet, write the names of the four pages of the final card on each page (see Fig.1).

When you unfold the sheet you will see how the four pages have to be arranged.

- ✓ Open the LibreOffice Drawing program.

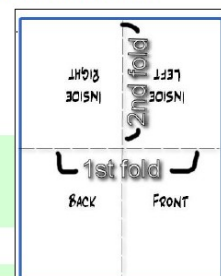


Fig.1. Greeting card page layout.

If you are not a text oriented learner, or would like some personal help for creating your card, Len will be available in the Computer Room at 10:45, and again at 3PM on Tuesdays.

